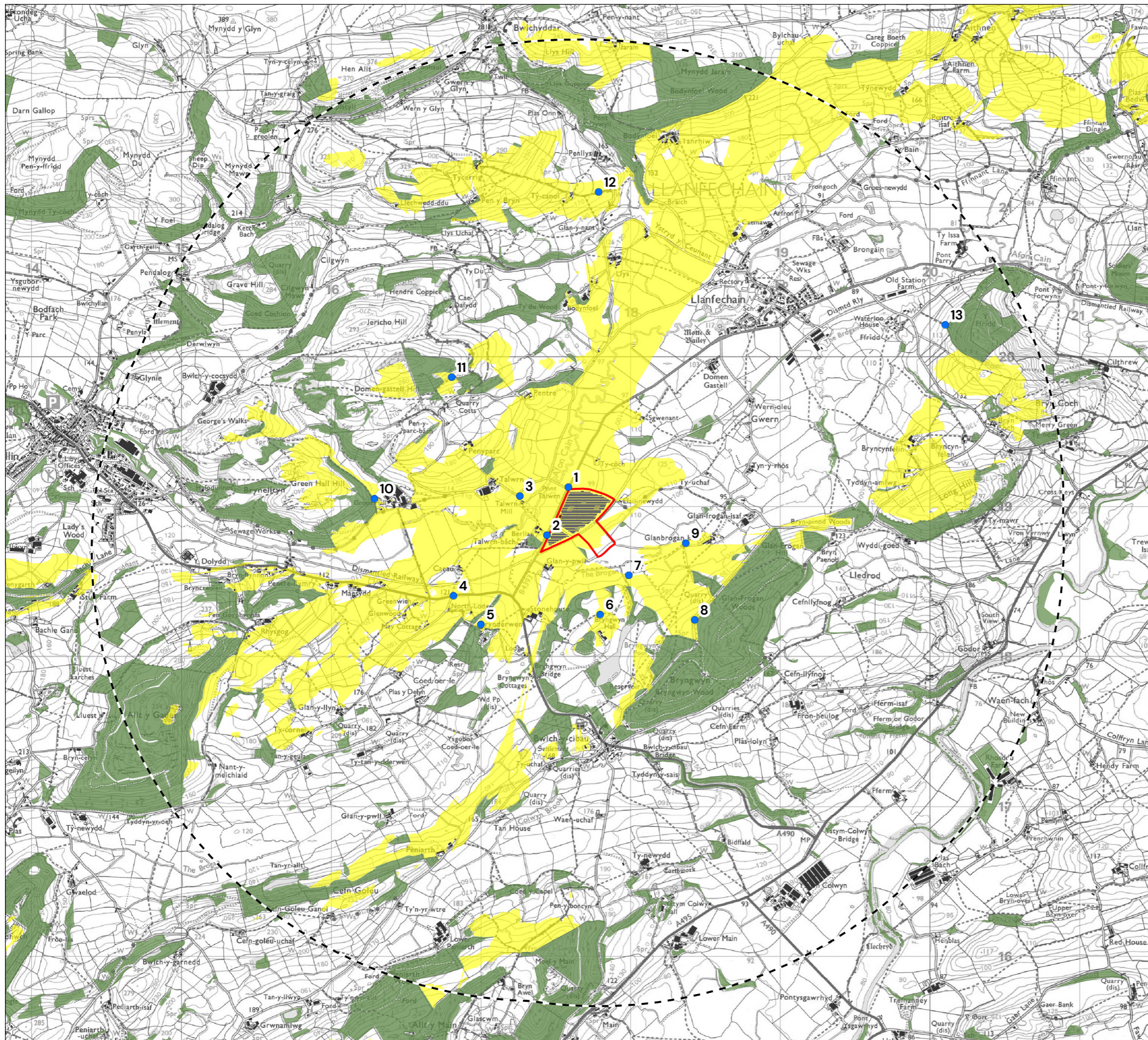


All Intellectual Property Rights (including but not limited to copyright) subsisting in or arising out of this drawing are owned by Pegasus Planning Group Ltd (Pegasus Group) and may not be copied, adapted, disseminated, reproduced and/or otherwise used without a written licence. Pegasus Group accepts no liability for any use of this drawing other than for its original purpose and by the original client except in circumstances where approval for use has been provided by Pegasus Group in writing. Use only in accordance with the original purpose and by the original client. Do not scale (or use) for construction, sales or any other purpose. Any queries to be referred to Pegasus Planning Group for clarification. Copyright © Pegasus Planning Group, Limited 2026. Use of this drawing is subject to the Terms & Conditions available at: [www.pegasusgroup.co.uk](https://www.pegasusgroup.co.uk). Crown copyright and database rights 2026. Ordnance Survey, AC0000860822.



- KEY**
- Site Boundary
  - 3km Study Area
  - Proposed Solar Arrays - 2.4m Height
  - Proposed Substation - 2.9m Height
  - OS OpenMap Local Buildings
  - OS OpenMap Local Woodland
  - Screened Zone of Theoretical Visibility
  - Viewpoint Location

**Screened ZTV Production Information:**

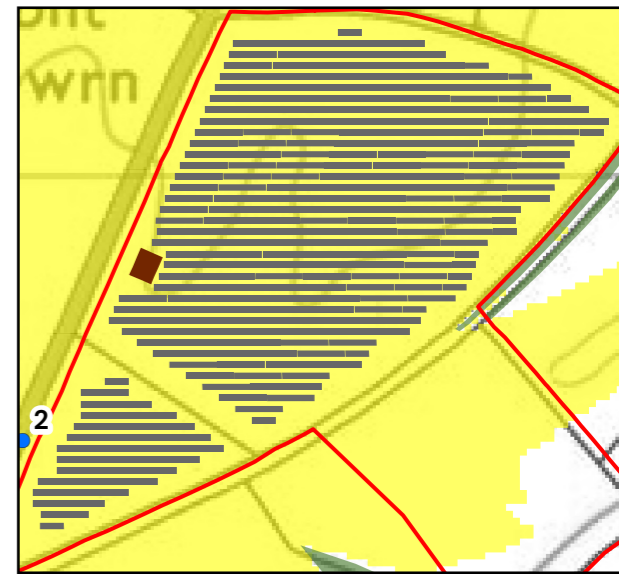
DTM data used in calculations is OS Terrain 5 that has been combined with OS Open Map Local data for woodland and buildings to create a Digital Surface Model (DSM).

Indicative woodland and building heights are modelled at 15m and 8m respectively.

Viewer height set at 1.7m (in accordance with para 6.11 of GLVIA Third Edition).

Calculations include earth curvature and light refraction

N.B. This Zone of Theoretical Visibility (ZTV) image illustrates the theoretical extent of where the development may be visible from, assuming 100% atmospheric visibility, and includes the screening effect from vegetation and buildings, based on the assumptions stated above.



REV	DATE	DESCRIPTION

**SCREENED ZONE OF THEORETICAL VISIBILITY**

**BROGAN SOLAR FARM**

**FUSE ENERGY SUPPLY LIMITED**

DATE	SCALE	DRAWN	APPROVED
16/04/2026	1:25,000@A3	MCL	HS

SHEET	REV	N	O	0.5 KM
-	B	▲	└───┘	